

AURORA 3



150 cm



porta
5 mm



fisso
6 mm



3 cm



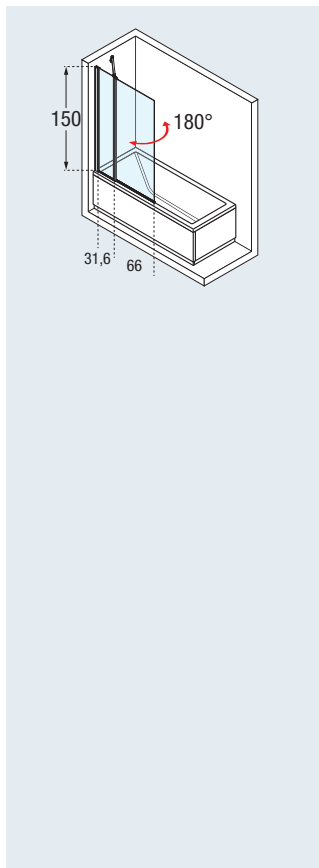
p. 309



PARETE VASCA, 1 FISSO E 1 ANTA GIREVOLE A 180°



SOPRAVASCA



Misure	Codice	Scelta Vetro			Scelta Profilo / Prezzo		
		1	2	4	A	B	K
		Trasparente	Aqua	Satin	Bianco	Silver	Cromo
98 x 150 H	AURORAN 3-	<input checked="" type="radio"/>	<input type="radio"/>	<input type="radio"/>	<input type="radio"/>	<input type="radio"/>	<input type="radio"/>
cm 17 ↔ 66 + 30 ↔ 80 x H 120 ↓ 170	AURORAN 3 SP						

ESEMPIO COMPILAZIONE CODICE:

AURORAN3-1A

=

AURORAN3-

+

1

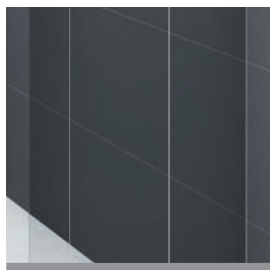
+

A

• Disponibilità indicativa deposito centrale 7gg.

DATI TECNICI

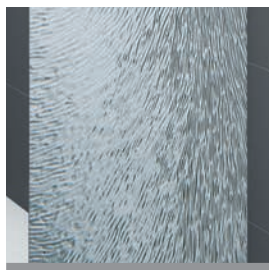
VETRO TEMPRATO (European standards UNI EN 14428)



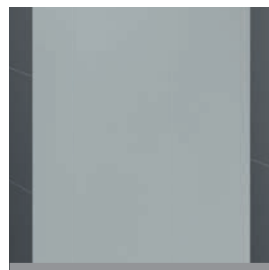
trasparente
COD. 1



aqua
COD. 2
solo per:
- Young 2.0 1V, 3V, 1BSV,
- Aurora 1, 2, 3

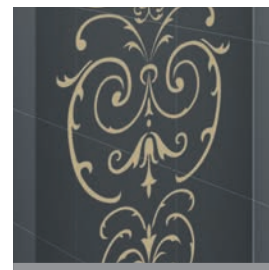


piumato
COD. 3
solo per: Aurora 9, Aurora 2AV4,
Aurora 2PV4, Aurora 2SV4, Aurora
3PV4, Aurora VFL4



satin
COD. 4
solo per:
- Young 2.0 1V, 3V, 1BSV,
- Rose Rosse 2MV, 3PV, 2PV, PHV+F
- Aurora 1, 2, 3

SERIGRAFIA



victoriana oro
COD. 72
solo per: Young 2.0 1V, 3V, 1BSV

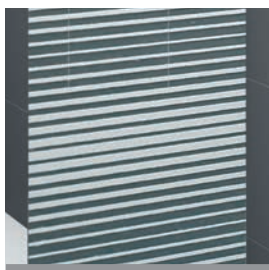
SERIGRAFIA



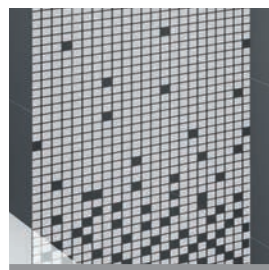
rose 1
COD. 56
solo per: Rose Rosse



rose 2
COD. 57
solo per: Rose Rosse



esprit
COD. 5
solo per: Aurora 2AV4, Aurora
2PV4, Aurora 2SV4, Aurora 3PV4,
Aurora VFL4



ravenna
COD. 51
solo per: Moon 1, Kuadra 3V

ACRILICO



anelli
COD. 16
solo per: Aurora 9



circolare
COD. 43
solo per: Aurora 2SV4, Aurora
3PV4, Aurora VFL4

FINITURA PROFILI



bianco
COD. A - D

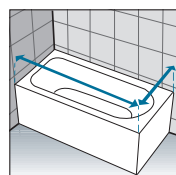


silver
COD. B
(eccetto: Aurora 9)



cromo
COD. K
(eccetto: Aurora 9)

COME RILEVARE LE MISURE



Rilevare le misure da muro a bordo esterno della vasca. Le misure devono essere rilevate sulla parete finita, a rivestimenti posati, secondo gli schemi riportati.